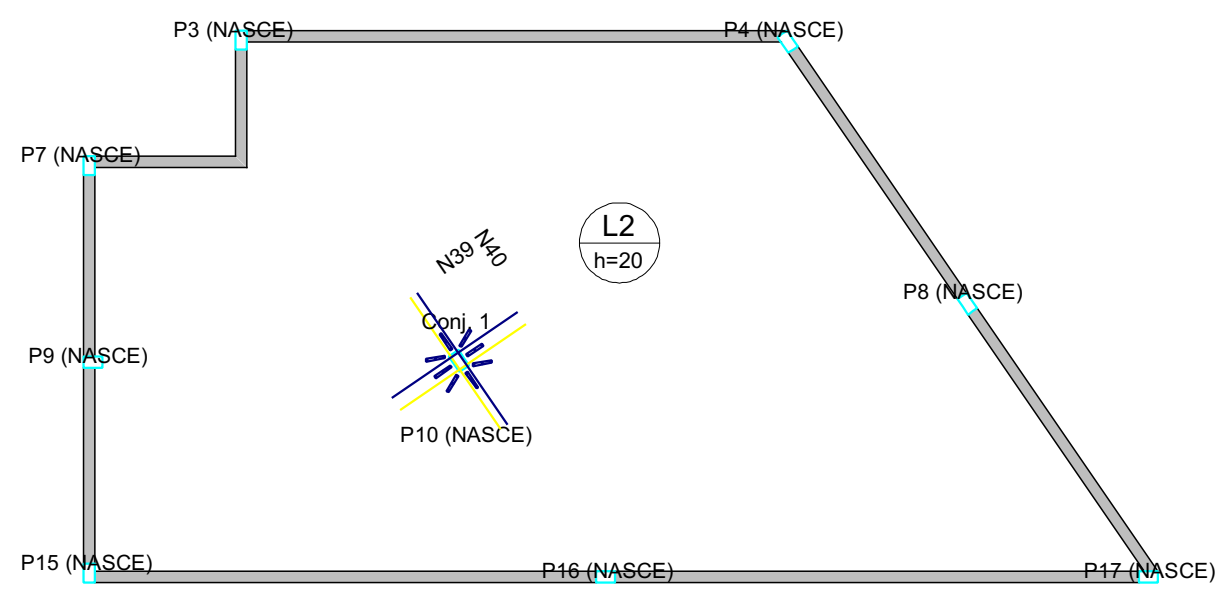
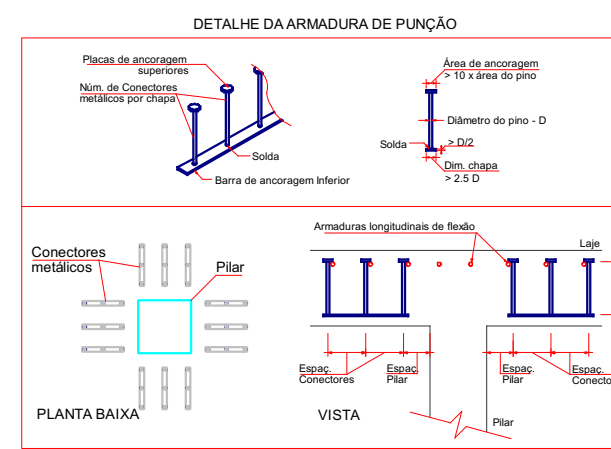
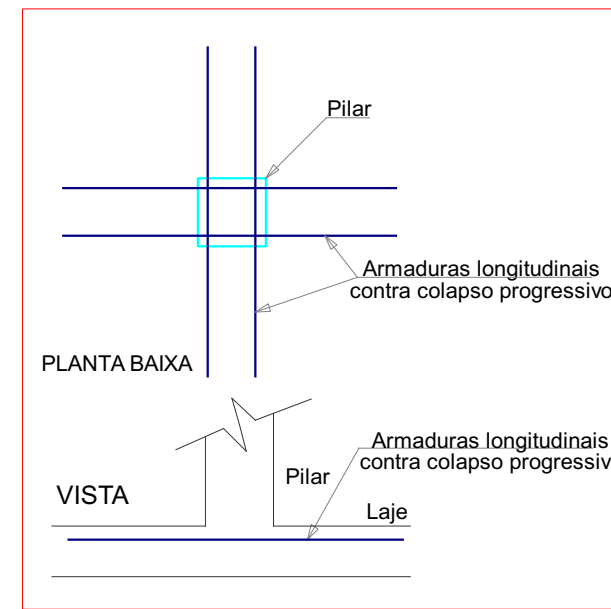


Conjunto	Quant.	Dim. chapa (cm)	ARMADURA DE PUNÇÃO					Quant. por chapa	Quant. total
			Aço	Diam. (mm)	Comp. (cm)	Espaço, Pilar (cm)	Espaço, Conectores (cm)		
1	98	25.2x3.2	CA25	8.0	13.0	7	11	3	294

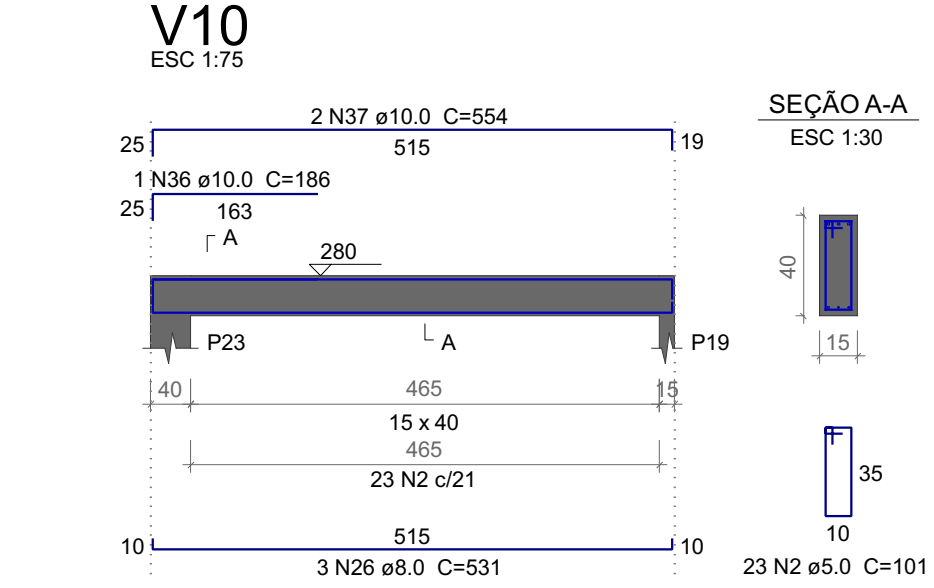
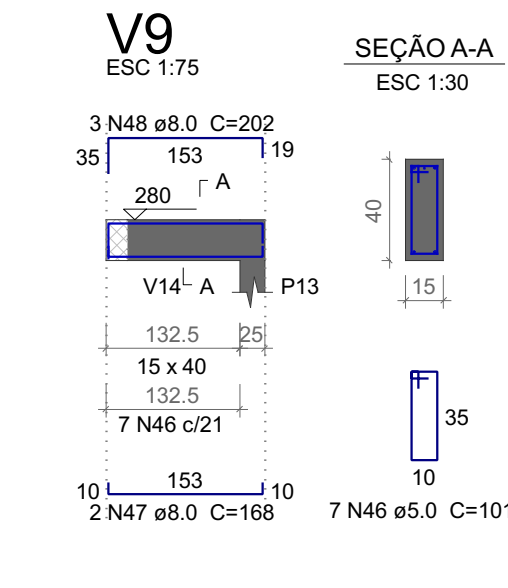
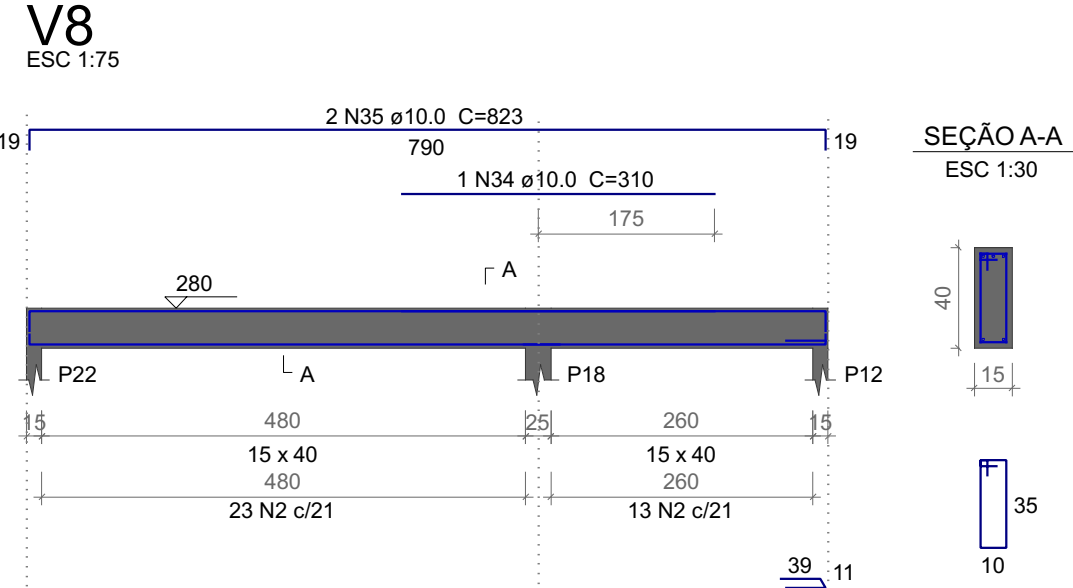
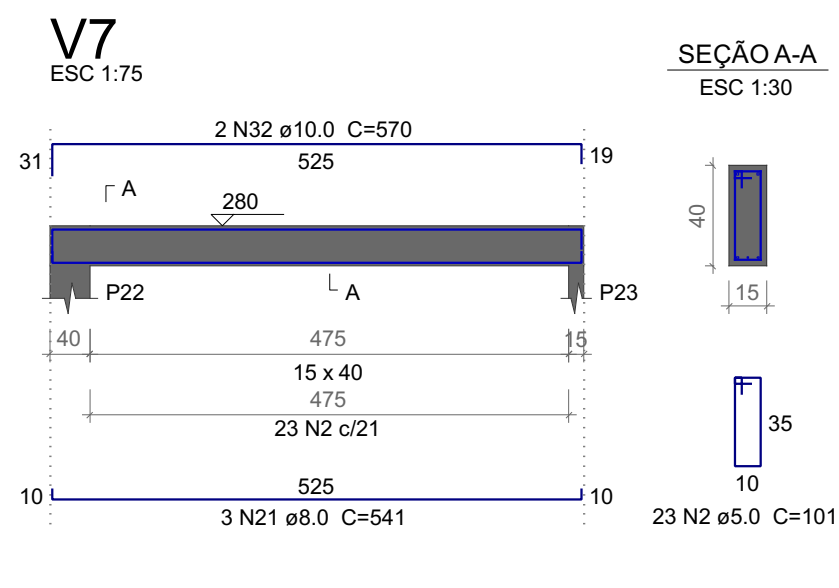
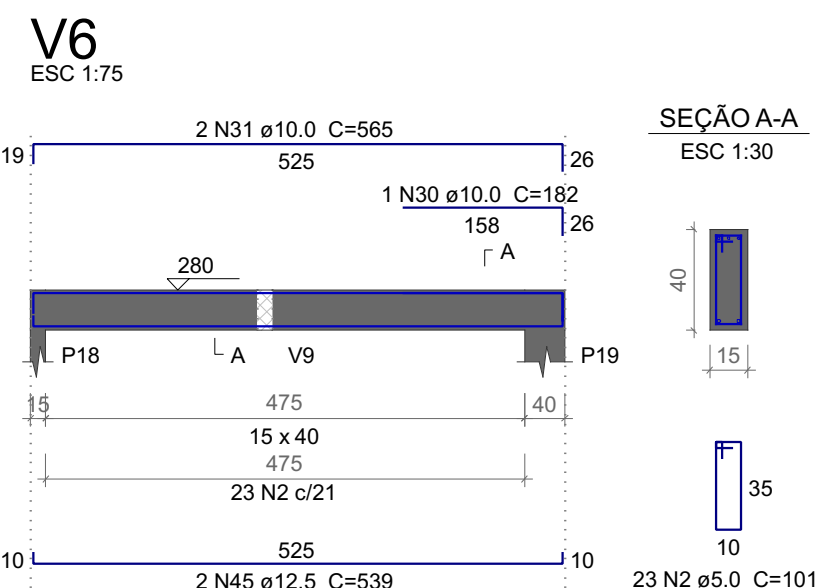
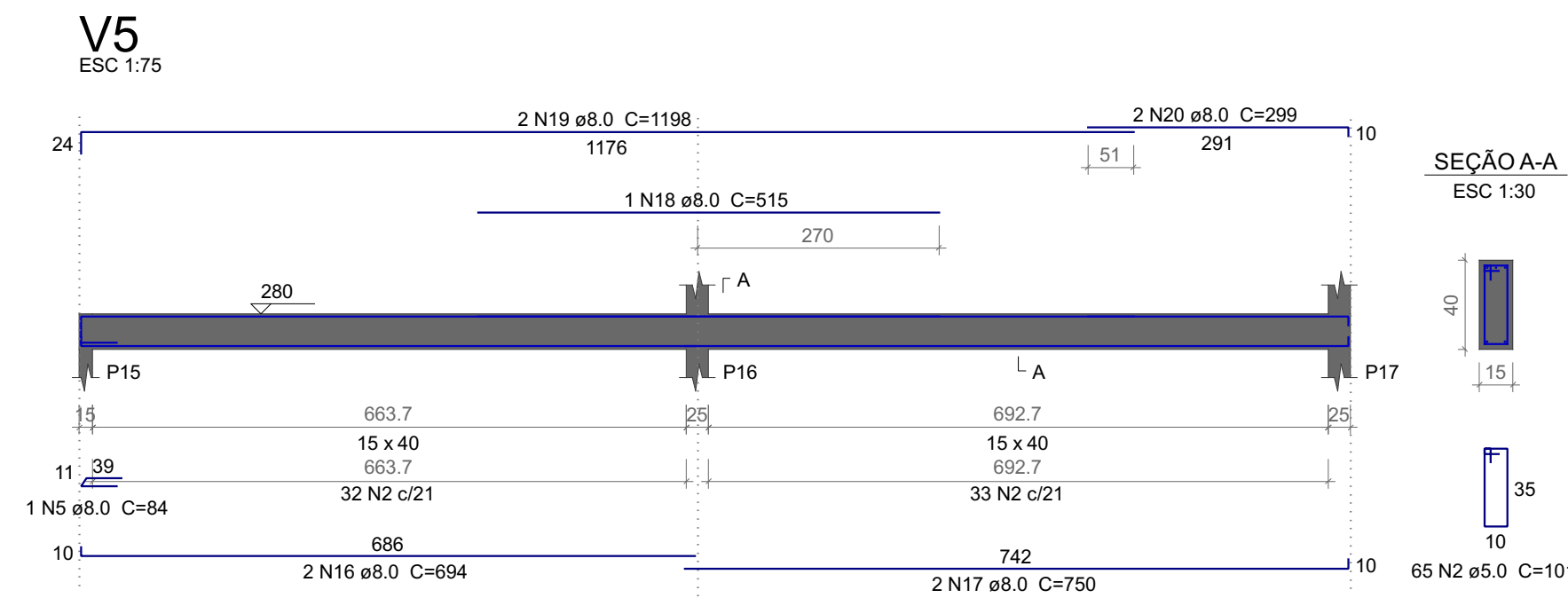
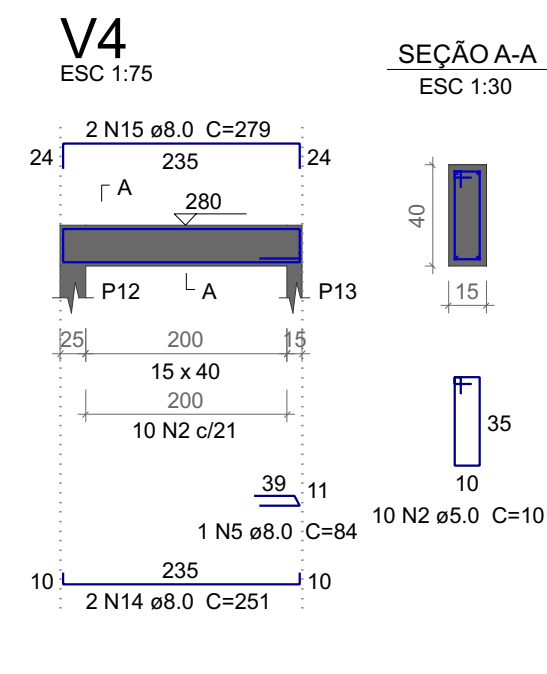
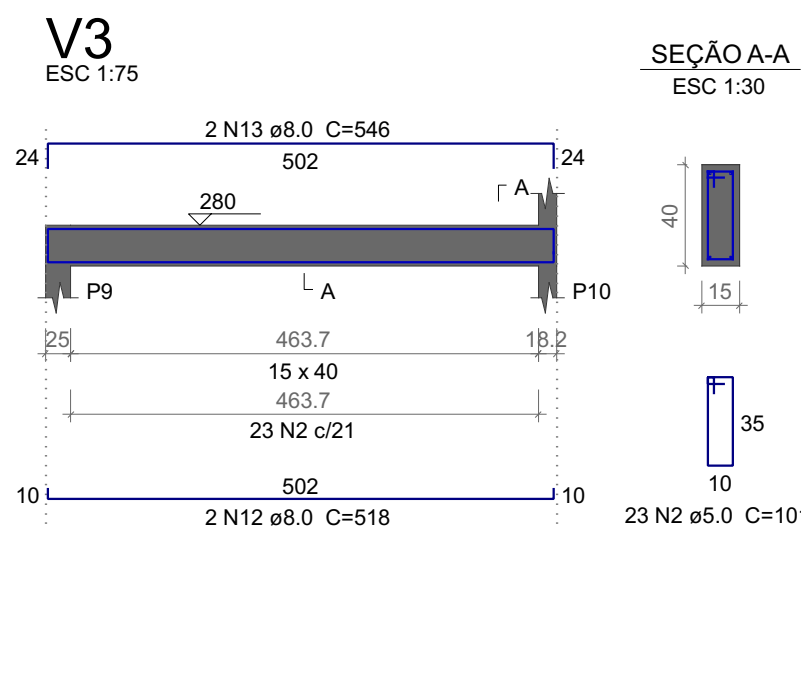
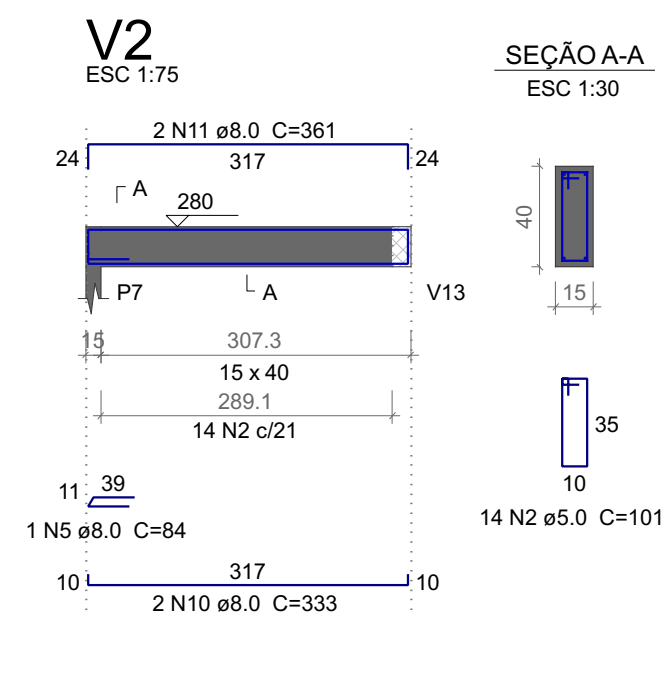
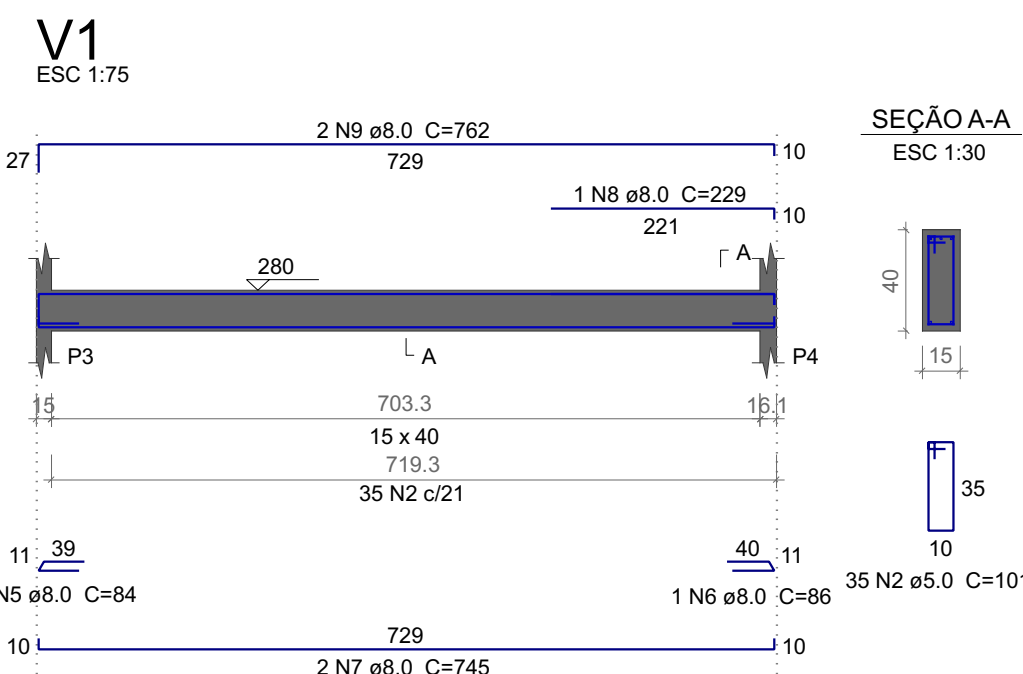
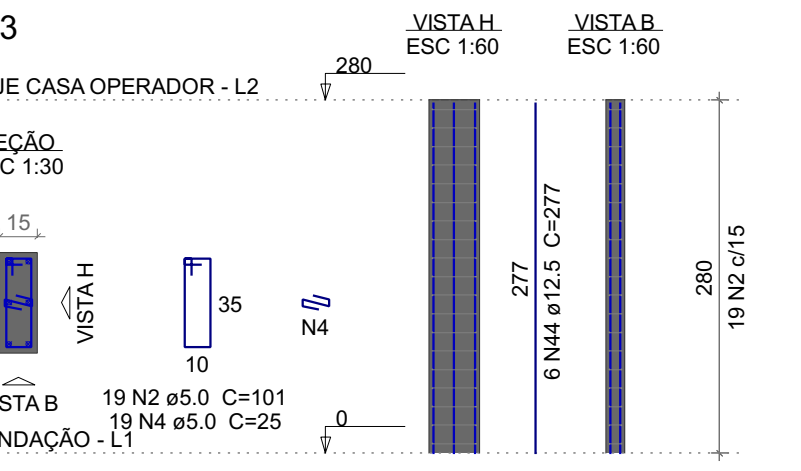
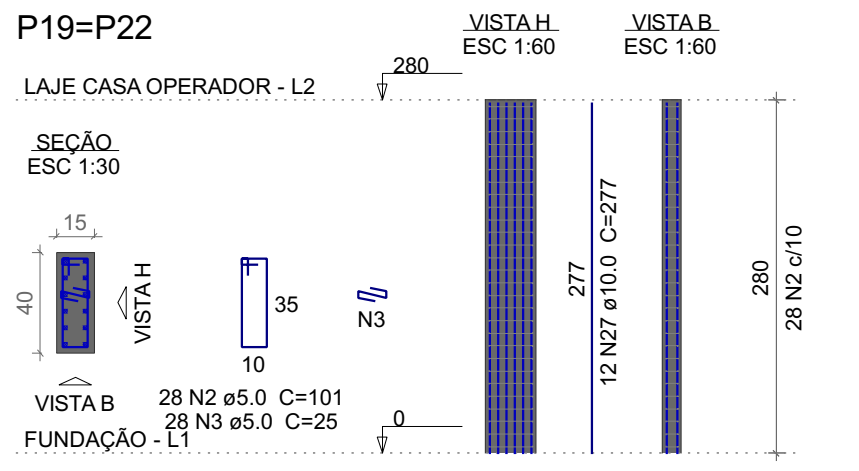
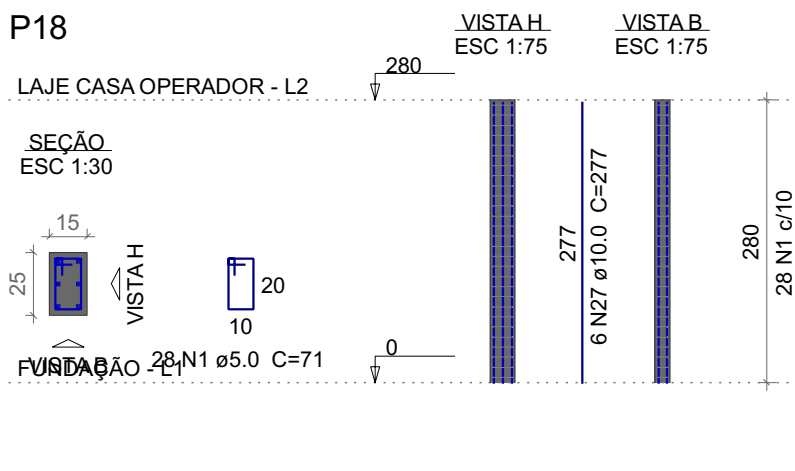
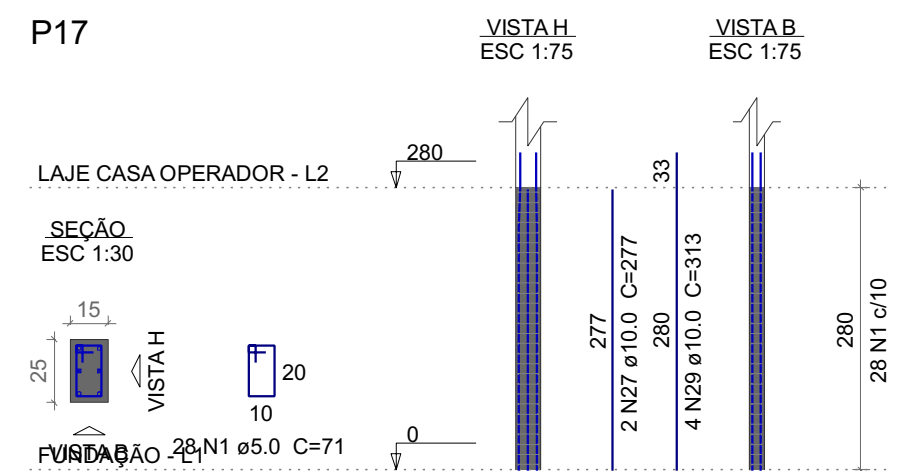
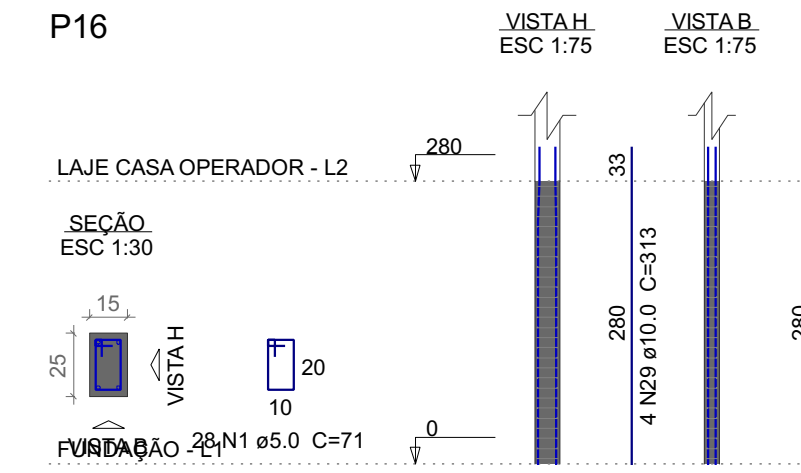
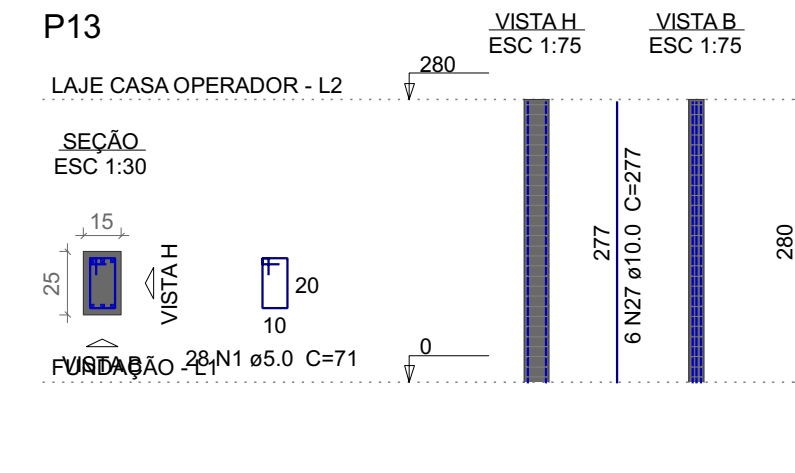
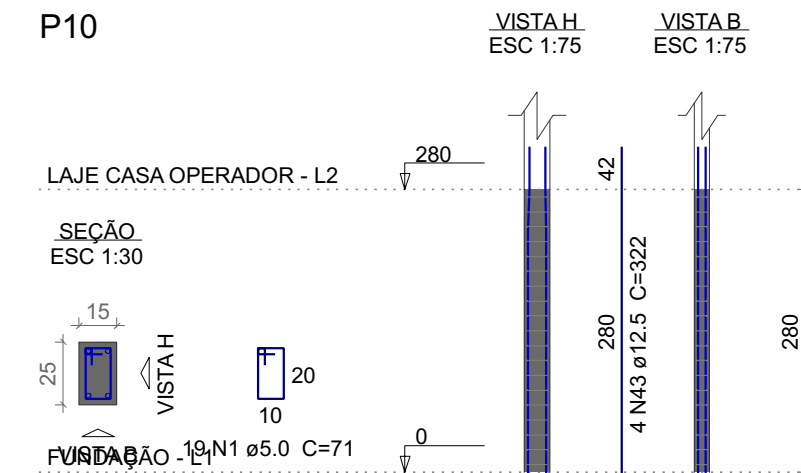
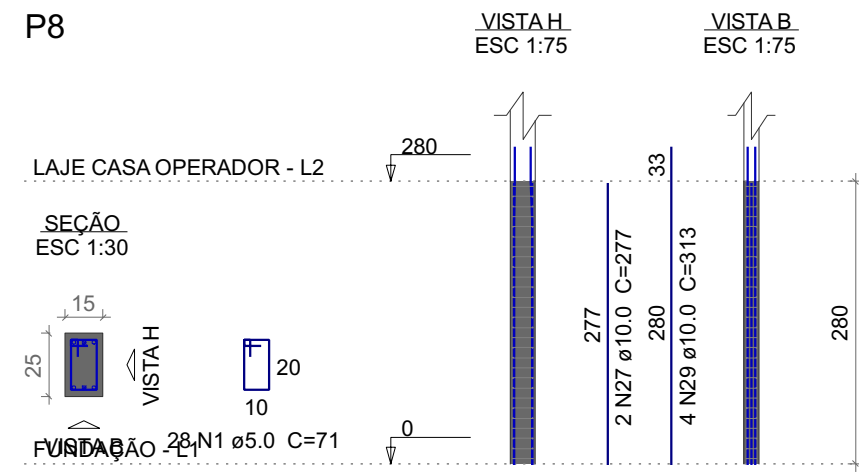
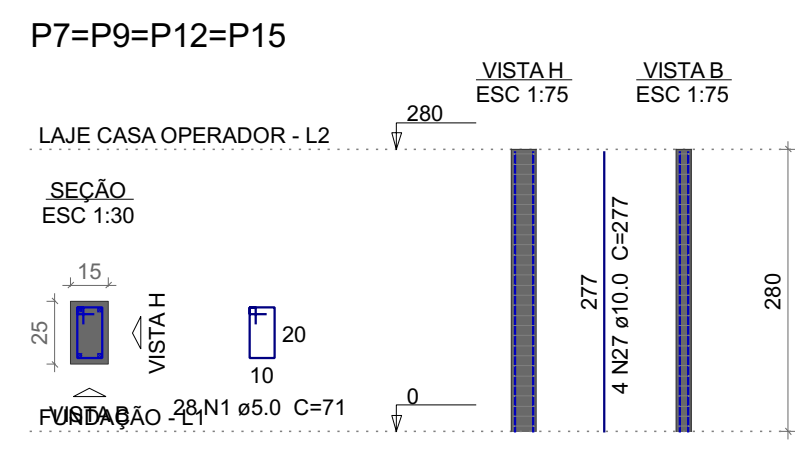
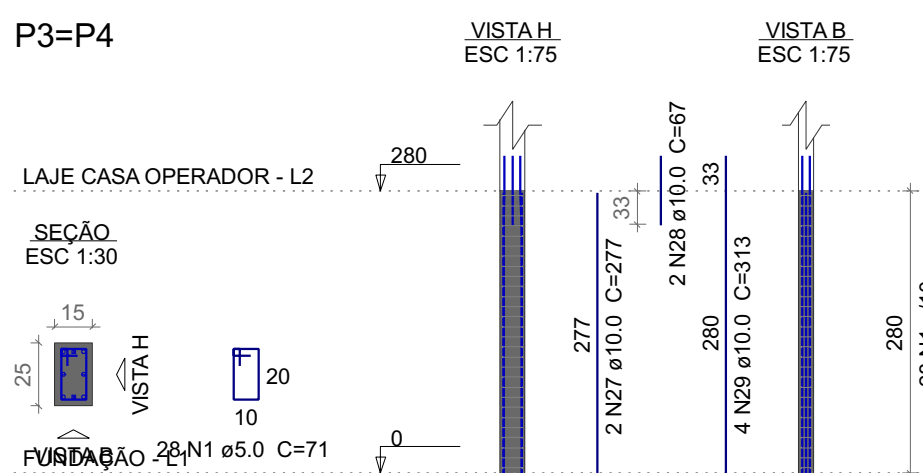


DET. DA ARMADURA CONTRA COLAPSO PROGRESSIVO PARA PILAR NASCENDO EM LAJE



DETALHAMENTO DE PUNÇÃO E CISALHAMENTO DO RADIER DO PAVIMENTO FUNDAÇÃO (NÍVEL 0)

Escala 1:100



Relação do aço

FUNDAÇÃO:	LAJE CASA OPERADORA	Punção	QUANT	C.UNIT (cm)	C.TOTAL (cm)
CA50		P8	4xP7	71	23217
		P10	P10	101	33027
		P13	P16	25	1400
		P17	P18	25	475
		2xP19	P23	84	420
		V1	V2	86	86
		V3	V4	745	1490
		V5	V6	229	229
		V7	V8	762	1524
		V9	V10	333	666
				361	722
				518	1036
				546	1092
				251	502
				279	558
				694	1388
				750	1500
				515	515
				1198	2396
				299	598
				541	1623
				307	614
				531	1593
				168	336
				202	606
				277	16620
				67	268
				313	6260
				182	182
				565	1130
				570	1140
				534	1068
				310	310
				823	1646
				186	186
				554	1108
				178	4628
				199	5771
				209	1254
				350	700
				224	1344
				322	1288
				277	1662
				539	1078

Resumo do aço				
LAJE	DIAM (mm)	C.TOTAL (m)	QUANT + 10 % (Barras)	PESO + 10 % (kg)
CA50	8.0	195	18	84.6
CA50	10.0	436.2	40	295.8
CA50	12.5	40.3	4	42.7
CA60	5.0	588.3	-	99.7
PESO TOTAL (kg)				
CA50		423.1		
CA60		99.7		

Volume de concreto (C-30) = 4.95 m³
Área de forma = 83.43 m²

PREFEITURA MUNICIPAL DE GOVERNADOR LINDENBERG

	PROJETO: PROJETO DE SANEAMENTO	ENDEREÇO: Governador Lindenberg-ES, 29.720-000	
	OBRA: CONSTRUÇÃO SISTEMA DE ÁGUA DO DISTRITO DE MORELLO - GOVERNADOR LINDENBERG	FASE DO PROJETO: PROJETO EXECUTIVO	
	CONTEÚDO: DETALHAMENTOS	PROJETO EXECUTIVO	
	Auto do Projeto: Daniel Pereira Silva	Proprietário do Projeto: Prefeitura Municipal Governador Lindenberg	
	Responsável Técnico: Milton Valério Rosa Almeida CREA-ES-043292-D	FOLHA Nº: 2 / 5	
	EQUIPE: Thiago Mendes	ESCALA: Indicada	DATA: JUL/2025
	PMGL		REVISÃO:
			REV-01